

Renovation of bridges & viaducts in Brussels



Gros Tilleul footbridge

At the Gros Tilleul roundabout in Laeken (BE)

Complete mission as designer

Owner
SPRB | Bruxelles Mobilité | Dir.
Gestion et Entretien des Voiries

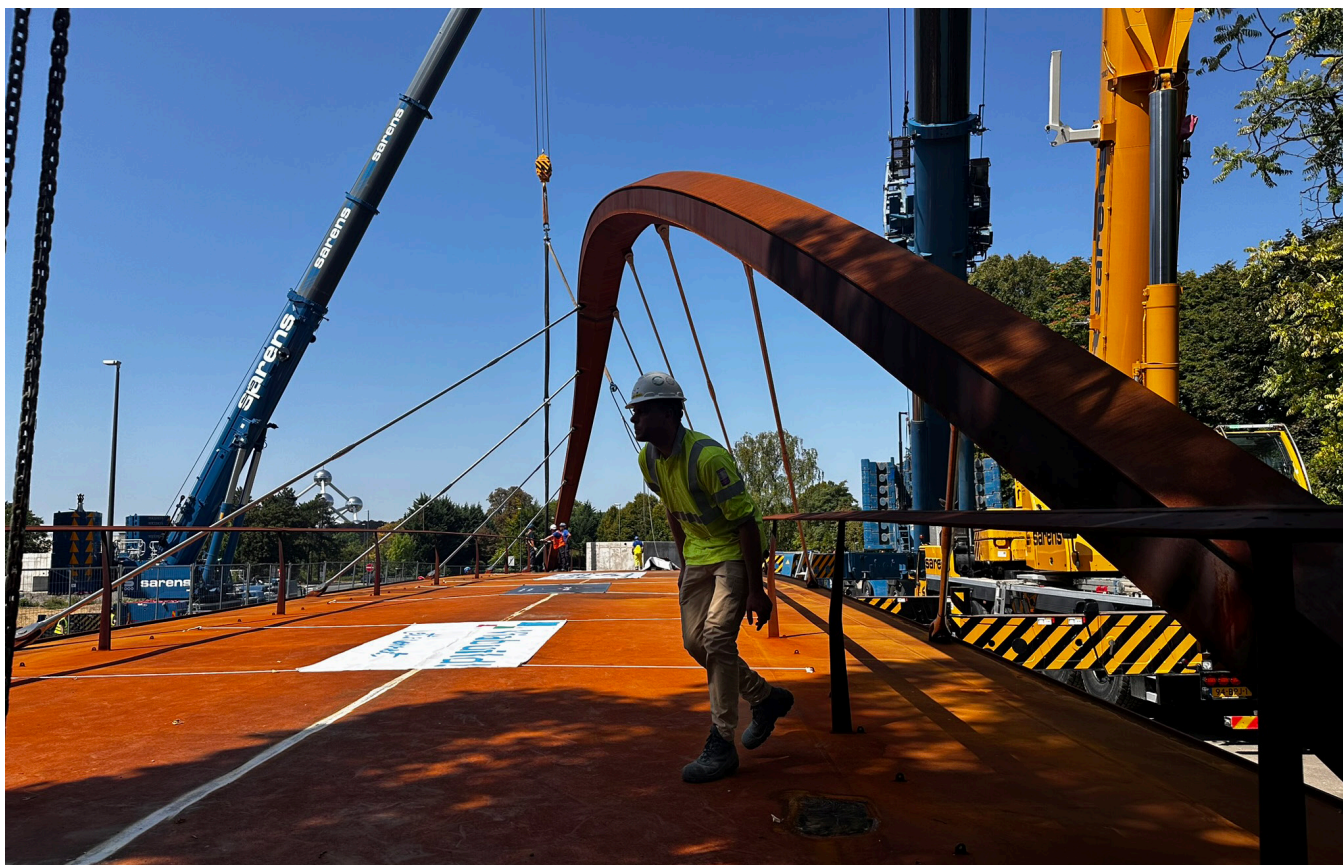
Architect
greisch

Cost of the works
€ 1,44 M excl. vat

Studies
2022 - 2024

Execution
2024 - 2025

OA



As part of the A12 motorway refurbishment project, the new footbridge at the Gros-Tilleul roundabout is taking shape.

This structure, measuring 45 metres long and 8.5 metres wide, is made of weathering steel and provides pedestrians and cyclists with easy passage over the road while keeping them away from traffic. As a result, the highly precise design of the deck allows for sufficient clearance for vehicles to pass under the structure without forcing pedestrians and cyclists to use slopes greater than 5%.

The deck, which can be up to 45 cm thick, is formed of a deck plate reinforced by transverse stiffeners supported by two side boxes. This deck is suspended from a single arch at an angle to the crossing axis. This bias stems from the architectural desire to position the surface formed by the arch perpendicular to the line of the road.

From this road at the entrance to Brussels, the view of the cross-braced suspension system is improved.

