

Rehabilitation and security of the N5/E420

On the N5/E420 highway, between Fraire and Philippeville (BE)



Preliminary project studies and project studies for civil engineering

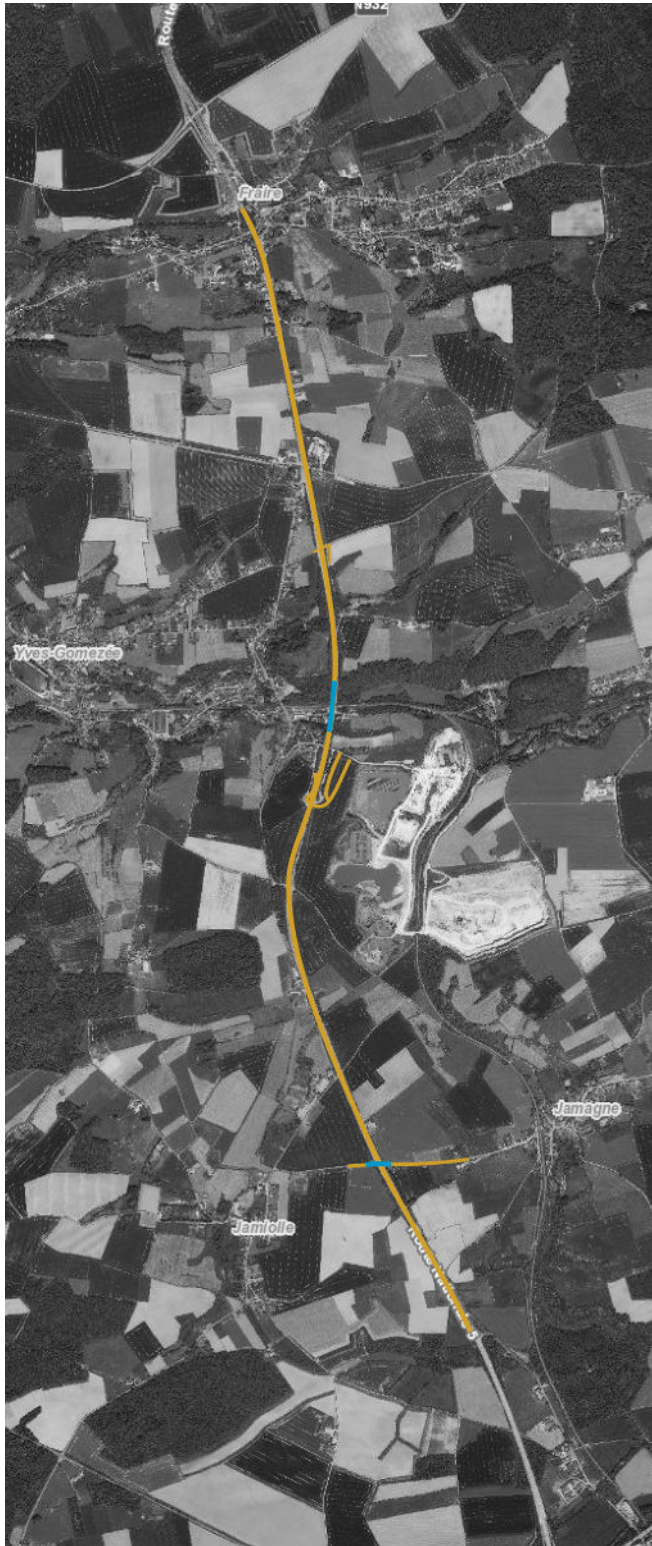
Owner
SPW - DG01 - Direction des
Routes de Namur et Sofico

Cost of the works
€16,3 M excl. vat.

Studies
2017 - ongoing

Execution
Scheduled in 2026

GC



The rehabilitation of the N5/E420 between Fraire and Philippeville, which is a section of 6 km, includes:

- upgrading the profile in length and the axis in plan to motorway standards ;
- the replacement of the ballast bed and a new coating ;
- widening the existing roads to create emergency lanes;
- improvement of access and exit ramps;
- the compliance of safety devices;
- the creation of land consolidation roads;
- sewerage works and the creation of storm basins,
- restoration of the upper surface of two existing bridges over which the main road passes.

In addition to road studies, the bureau greisch is also in charge of the architectural and stability studies for the construction of a overhead bridge on rue Belle Ruelle in Jamagne (span 40 m) and the reconstruction of the Yves-Gomezée viaduct (length 264 m).