

# Anderlecht Recypark - Wood expertise

Anderlecht (BE)

Execution study and expertise



Owner  
Bruxelles propriété

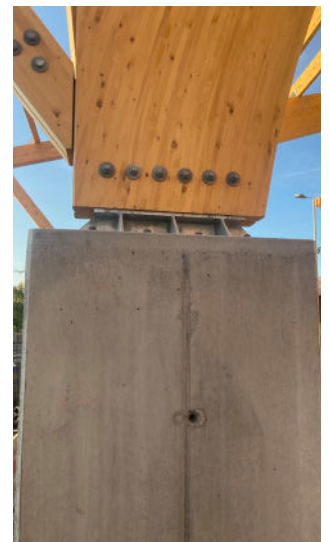
Architect  
51N4E

Cost of the works  
€ 8,11 M excl. vat of wich  
728 000 € for the hall

Studies  
2022 - 2023

Execution  
2023

ST RV



The **Recypark** project in **Anderlecht** is a fine example of circularity. After buying a horse shed near Bierset, the owner decided to carefully dismantle it and reuse the wooden structure.

Bureau greisch has been contacted to take responsibility for the stability of the recycled elements. To this end, we checked the condition of the dismantled timber frames, took part in a series of tests, drew up calculation notes justifying the stability of the re-used arches, and recommended screw reinforcements.

The Recypark aims to create a mixed space between a traditional container park integrated into the urban environment and a skate park.

Belgian Timber   
Construction Awards  2024

1<sup>st</sup> prize in the 'Non-Residential Buildings' category