

Rehabilitation of the N657 between Theux and Oneux, including bicycle and pedestrian facilities

N657 entre Theux and Oneux (BE)

Complete civil engineering, architecture and landscaping mission

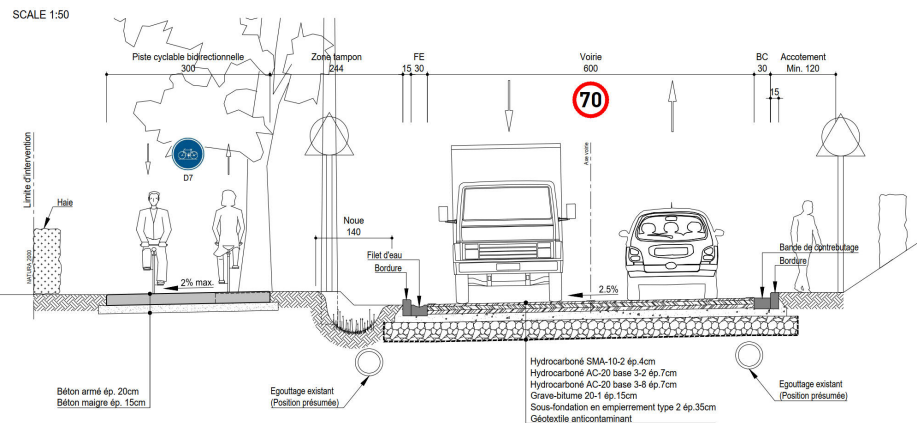
Owner
Sofico et SPW direction des routes de Verviers

Architect
Canevas

Cost of the works
€ 2 M excl. vat

Studies
2020 - ...

AR GC CS



The mission consists of rehabilitating the N657 between Theux and Oneux by integrating a pedestrian-cyclist facility and redesigning the junctions upstream and downstream of the railway in Theux.

The width of the roadway, roadsides and pavements is redistributed between car traffic and soft modes in order to integrate comfortable and safe pedestrian-cyclist facilities for all users.

The strengths of the design are:

- the creation of a two-way path reserved for pedestrians and cyclists on the left-hand side of the road going up from Theux to Oneux, with a balanced distribution between the space dedicated to soft modes and the roadways for a calmer and

safer traffic for all;

- making the junctions between the N657 and the roads perpendicular to it safer;
- taking into account the existing landscape: tree lines, Natura 2000 zones, etc;
- the increase in the presence of vegetation along the road;
- the readability and continuity of the pedestrian and bicycle route;

the urban redevelopment of the entrance to Theux.

The mission also includes the study and coordination of concessionaires.