

# Widening of the Nimy-Blaton canal

Baudour (BE)



## Complete civil engineering mission

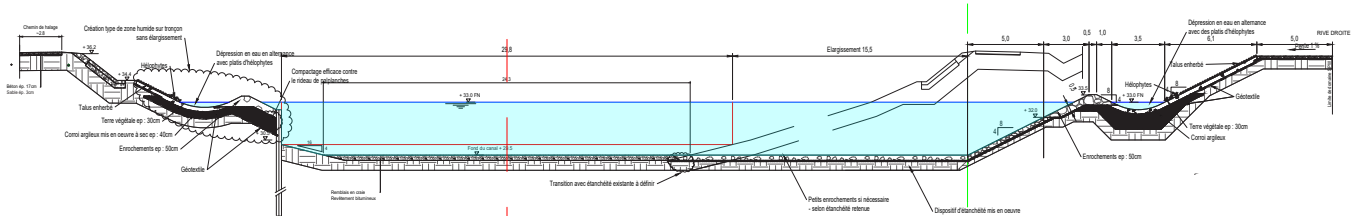
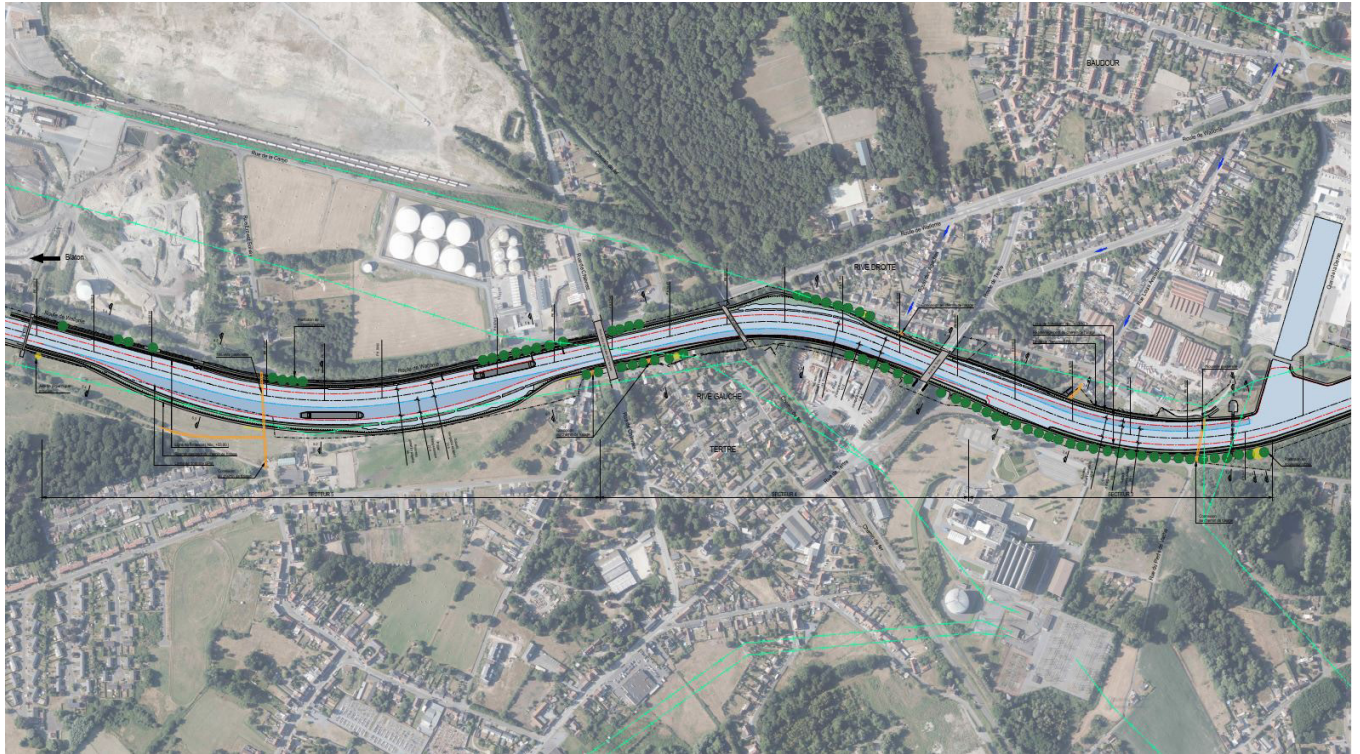
Owner  
Service Public de Wallonie  
Direction des Voies  
Hydrauliques de Mons

Cost of the works  
€ 36 M excl. vat

Studies  
2019 - ongoing

Execution  
2023 - 2025

GC



This study is being carried out as part of the "Seine-Scheldt gateway link - cross-border section between Compiègne and Ghent" project.

The Seine-Scheldt East project provides for the upgrading of the inland waterway link between the Scheldt and the Meuse basins to a gauge of 2000 tonnes (ECMT class Va). The upgrading involves, on the one hand, the widening of certain sections of the canals and, on the other hand, the construction of four new locks with dimensions adapted to the Va class.

This Nimy-Blaton canal was originally designed for 600 T traffic (CEMT class II). Later, 1350 T traffic (CEMT class IV) was allowed. The canal has a relatively small, wetted area and several curves that are too narrow to allow smooth two-way navigation of 2000 T ships (CEMT class Va).

The studies plan to widen 5 sections: 2 crossing zones to reduce the maximum length of a one-way section to 2.4 km and 3 zones whose narrow width and curve radius constitute a bottleneck limiting the fluidity of the existing route.

A total of 2400 m of riverbank is to be worked on.

The bureau greisch-ISL association has proposed for each enlargement alternatives which bring ecological added value by encouraging the development of vegetation, thus improving the overall environmental quality of the site (fauna and flora).

It is also suggested that the banks and facilities not affected by the project be upgraded, and that the overall landscape of the site and the new soft mode connections between the two banks be considered. The implementation of plant engineering techniques is also a significant asset in terms of landscape.