

Aula Magna at Louvain-la-Neuve

Louvain-la-Neuve (BE)



Mission: stability studies, execution project, supervision and checking on the site, expert appraisal.

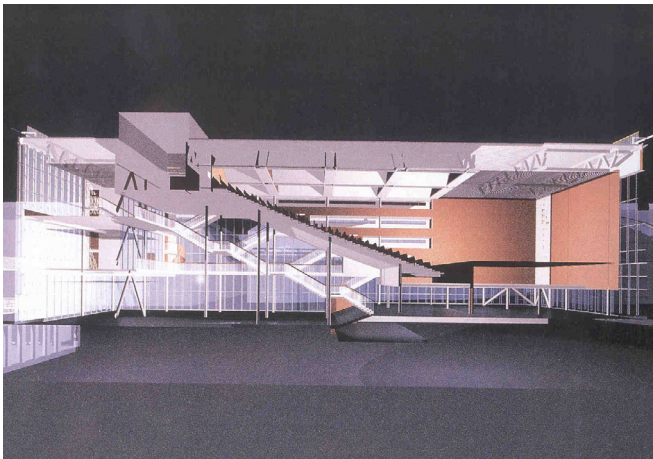
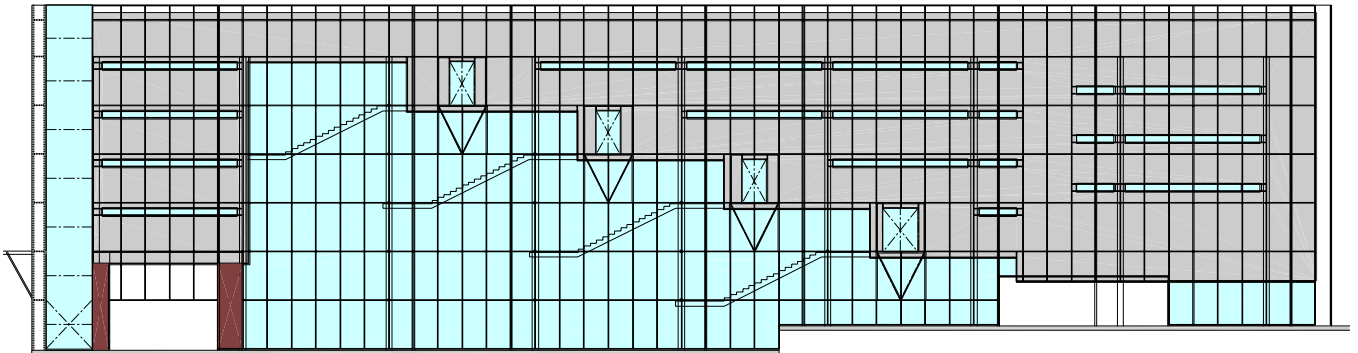
Owner
Louvain Catholic University
(UCL)

Architect
Samyn & Partners

Cost of the works
€ 1,6 M excl. vat (excluding
glass)

Execution
1999 - 2001

ST



19-meter-high academic conference hall with a 2 100 m² surface area, wrapped by a double skin of glass and notably housing a room with a capacity of 1 200 seats.