

Vertbois complex at Liège

At the junction between the Vertbois and the Prémontrés streets, Liège (BE)



Complete mission of stability

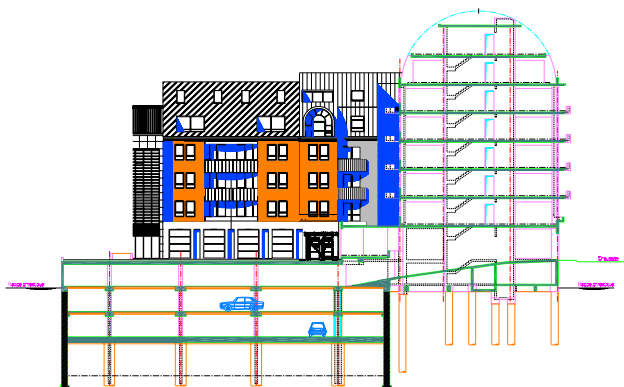
Owner
SOLICO - Liege

Architect
Architectes college Daniel Lesage et Christian Satin

Cost of the works
€ 20,2 M excl. vat

Execution
1997 - 2002

ST



This building houses a set of offices, stores and apartments over seven levels for a 22 500 m² surface area in all and a 230-spaces car park over three underground levels (3 x 1.900 m²).

The phreatic table level is located three meters beneath the first floor. That's why a protecting wall was realized by means of 13-meter-deep casted partitions in order to allow the stabilization of the construction into the schist and to watertighten the walls. The pressurizations at the R-3 level are stabilized by a thick slab and a gravel draining layer.

